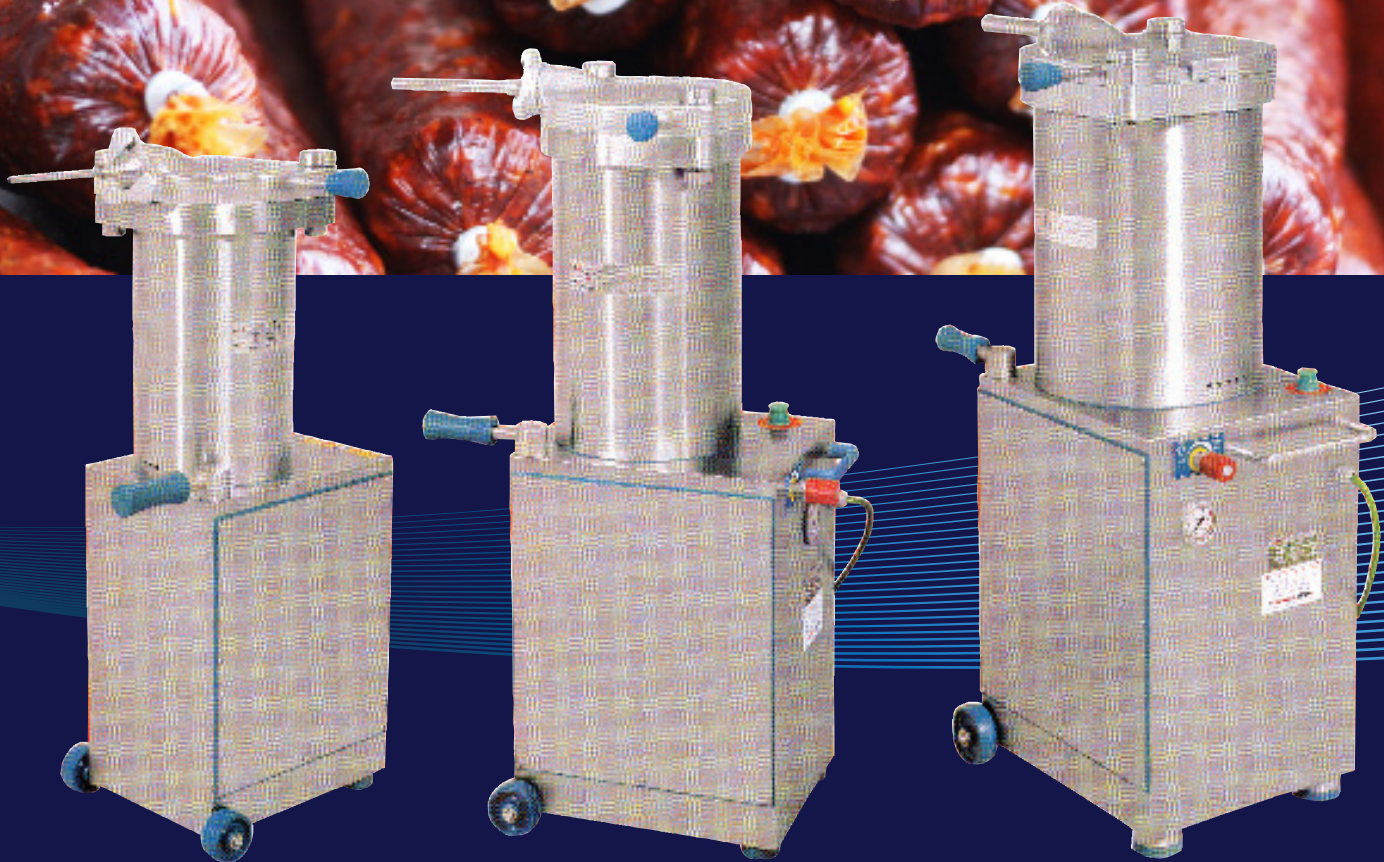




FOOD EQUIPMENT

SERVING THE FOOD INDUSTRY SINCE 1951

Hydraulic Sausage Stuffers



*Locally QPS applied to
13743, 13745, 13744, 13746, 13753,
13755, 13756, 13750, 13751, 13752,
13759, 17146, 41708 & 41709 Only



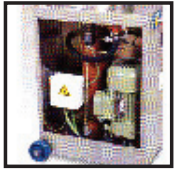
Authorized Dealer

FOOD EQUIPMENT

HYDRAULIC SAUSAGE STUFFER



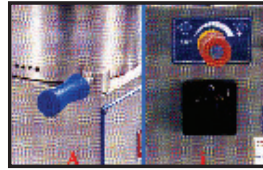
These machines come with extra power, automatic piston decompression, independent oil reservoir, spare lid seal, oil, piston extracting wrench, and three stainless steel spouts (12mm, 20mm, and 30mm). The piston is perfectly sealed and removable.



High pressure hydraulic group. Independent oil reservoir



Equipped with wheels, pressure gauges, and waterproof electric switchboards.



Turn on/off motor automatically by knee lever or manual switch



Removable sealed piston. Ergonomically designed for comfort.



Special Order: Manual portioning device. Curved nozzle/horn with cutting valve to fill cans.

TECHNICAL SPECIFICATION

ITEM	MODEL	POWER	CAPACITY	LID AND PISTON	ELECTRICAL	WEIGHT	PACKAGING WEIGHT	PACKAGING DIMENSIONS
13743*	SS-ES-0015-PA	0.75 HP / 0.56 kW	33 lbs.	Aluminum	208V/60Hz/3	± 223 lbs.	254 lbs.	21" x 23" x 47"
13744*	SS-ES-0015-PAM	1.75 HP / 1.31 kW	33 lbs.	Aluminum	220V/60Hz/1	± 223 lbs.	254 lbs.	21" x 23" x 47"
41708*					110V/60Hz/1			
13745*	SS-ES-0020-PA	0.75 HP / 0.56 kW	44 lbs.	Aluminum	208V/60Hz/3	± 231.5 lbs	260 lbs.	24" x 22" x 56"
13746*	SS-ES-0020-PAM	1.75 HP / 1.31 kW	44 lbs.	Aluminum	220V/60Hz/1	± 231.5 lbs	260 lbs.	24" x 22" x 56"
13750*	SS-ES-0026-PA	1.5 HP / 1.12 kW	57 lbs.	Aluminum	208V/60Hz/3	± 289 lbs.	313 lbs.	24" x 22" x 56"
13751*	SS-ES-0026-PAM	2.25 HP / 1.68 kW	57 lbs.	Aluminum	220V/60Hz/1	± 289 lbs.	313 lbs.	24" x 22" x 56"
13752*	SS-ES-0026-PAS	1.5 HP / 1.12 kW	57 lbs.	Stainless Steel	208V/60Hz/3	± 289 lbs.	313 lbs.	24" x 22" x 56"
13753*	SS-ES-0026-PASM	2.25 HP / 1.68 kW	57 lbs.	Stainless Steel	220V/60Hz/1	± 289 lbs.	313 lbs.	24" x 22" x 56"
41709*					110V/60Hz/1			
13755*	SS-ES-0031-PAS	2 HP / 1.5 kW	68 lbs.	Stainless Steel	208V/60Hz/3	± 315.25 lbs.	350 lbs.	24" x 22" x 56"
13756*	SS-ES-0031-PASM	2.25 HP / 1.68 kW	68 lbs.	Stainless Steel	220V/60Hz/1	± 315.25 lbs.	350 lbs.	24" x 22" x 56"
13757	SS-ES-0042-PAS	2.5 HP / 1.86 kW	92 lbs.	Stainless Steel	208V/60Hz/3	± 527 lbs.	594 lbs.	30" x 25" x 56"
13758	SS-ES-0042-PASM	2.5 HP / 1.86 kW	92 lbs.	Stainless Steel	220V/60Hz/1	± 527 lbs.	594 lbs.	30" x 25" x 56"
13759*	SS-ES-0052-PAS	2.5 HP / 1.86 kW	114 lbs.	Stainless Steel	208V/60Hz/3	± 610.7 lbs.	662 lbs.	30" x 26" x 59"
17146*	SS-ES-0052-PASM	2.5 HP / 1.86 kW	114 lbs.	Stainless Steel	220V/60Hz/1	± 610.7 lbs.	662 lbs.	30" x 26" x 59"

* Locally QPS Approved

Accessories for Hydraulic Stuffer

36051	All Stainless Steel Nozzle/horn, 12 mm
36054	All Stainless Steel Nozzle/horn, 20 mm
36057	All Stainless Steel Nozzle/horn, 30 mm
18944	Portion Control Head

P = professional	Fixed and stronger rectified barrel (cylinder) with solid construction. Motor start and stop by contactor
A = automatic	Less wear, noise and power consumption; lower temperature; longer life of oil; pump and hydraulic group; water proof, low voltage switchboard.
M = HD	Single Phase Motor-Heavy Duty
S=Steel	Stainless Steel Lid and Piston (opt. On SS-ES-0026-PAS)

OMCAN INC.

Telephone: 1-800-465-0234

Fax: (905) 607-0234

E-mail: sales@omcan.com

Website: www.omcan.com

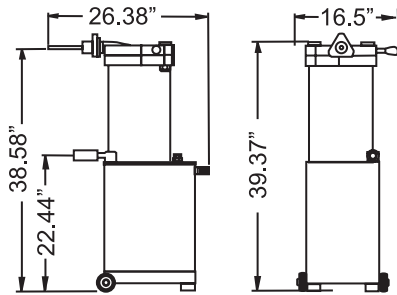


Follow us to keep up to date with the latest news and offers

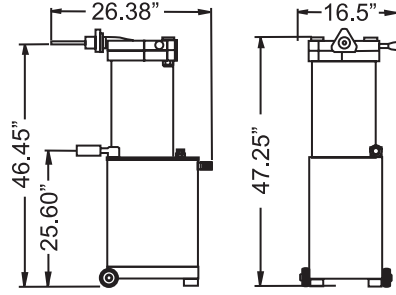


2015.E.O.E

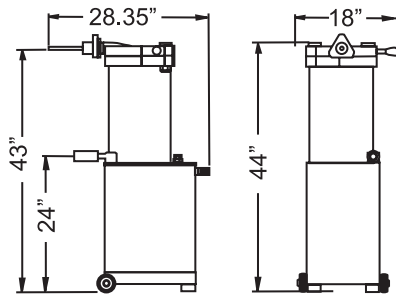
TECHNICAL DIMENSIONS



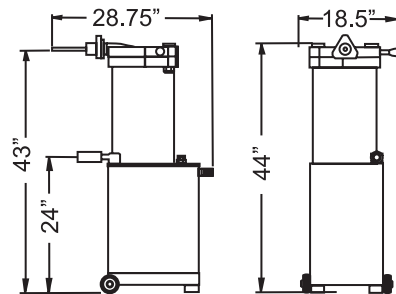
SS-ES-0015, GROSS WEIGHT: 250 LBS.



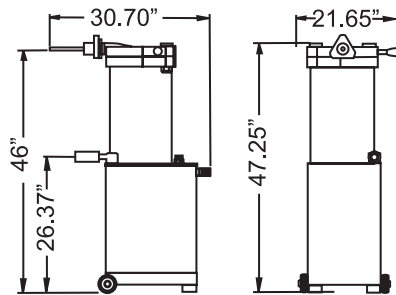
SS-ES-0020, GROSS WEIGHT: 260 LBS.



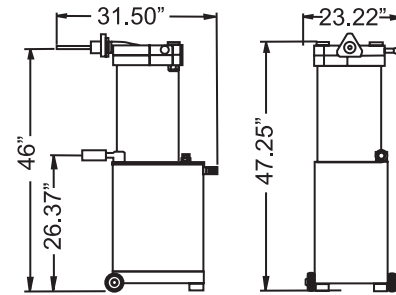
SS-ES-0026, GROSS WEIGHT: 317.50 LBS



SS-ES-0031, GROSS WEIGHT: 344 LBS.



SS-ES-0042, GROSS WEIGHT: 613 LBS.



SS-ES-0052, GROSS WEIGHT: 696 LBS.

OMCAN INC.

Telephone: 1-800-465-0234
Fax: (905) 607-0234
E-mail: sales@omcan.com
Website: www.omcan.com



Follow us to keep up to date with the latest news and offers

